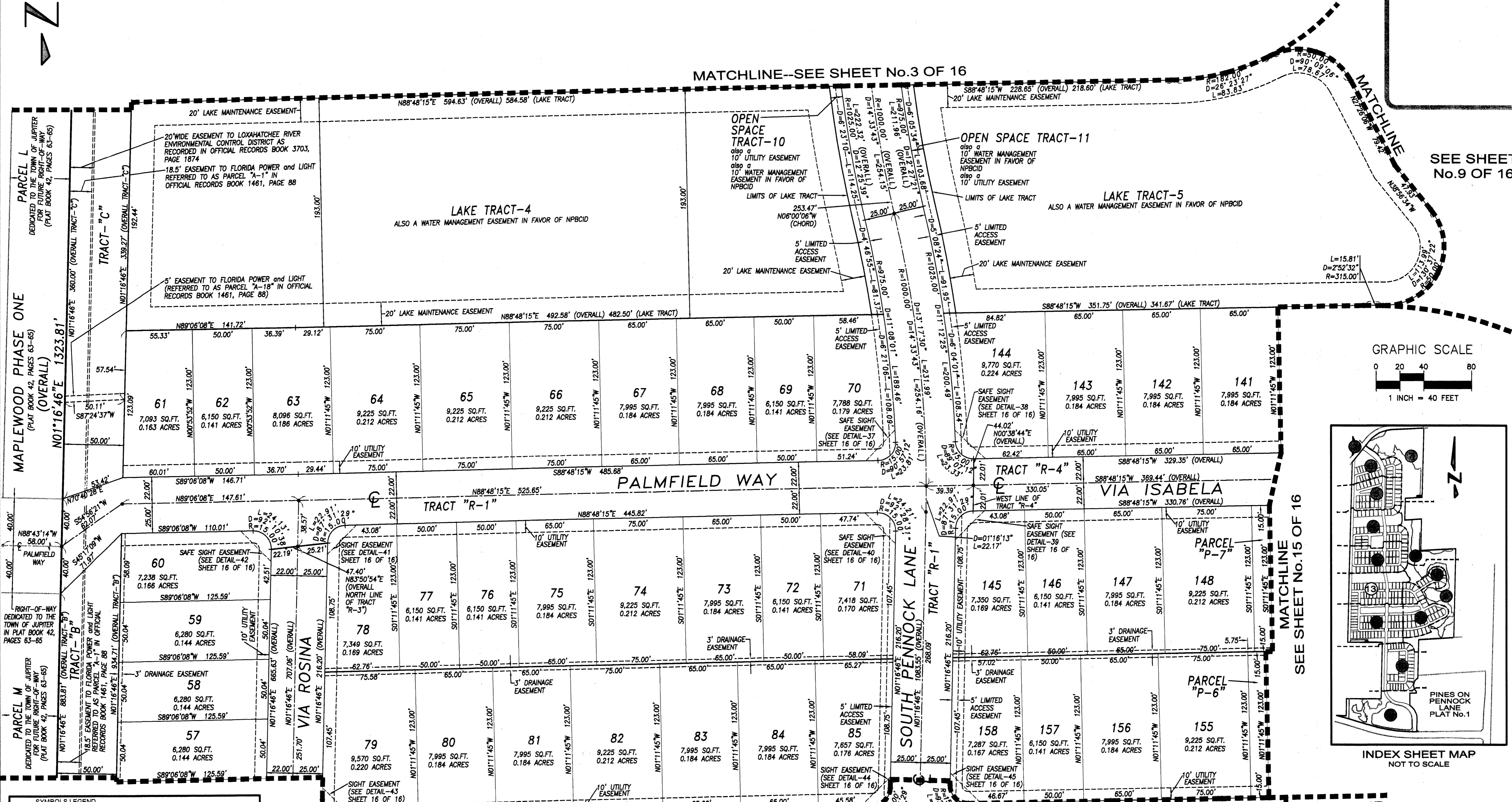
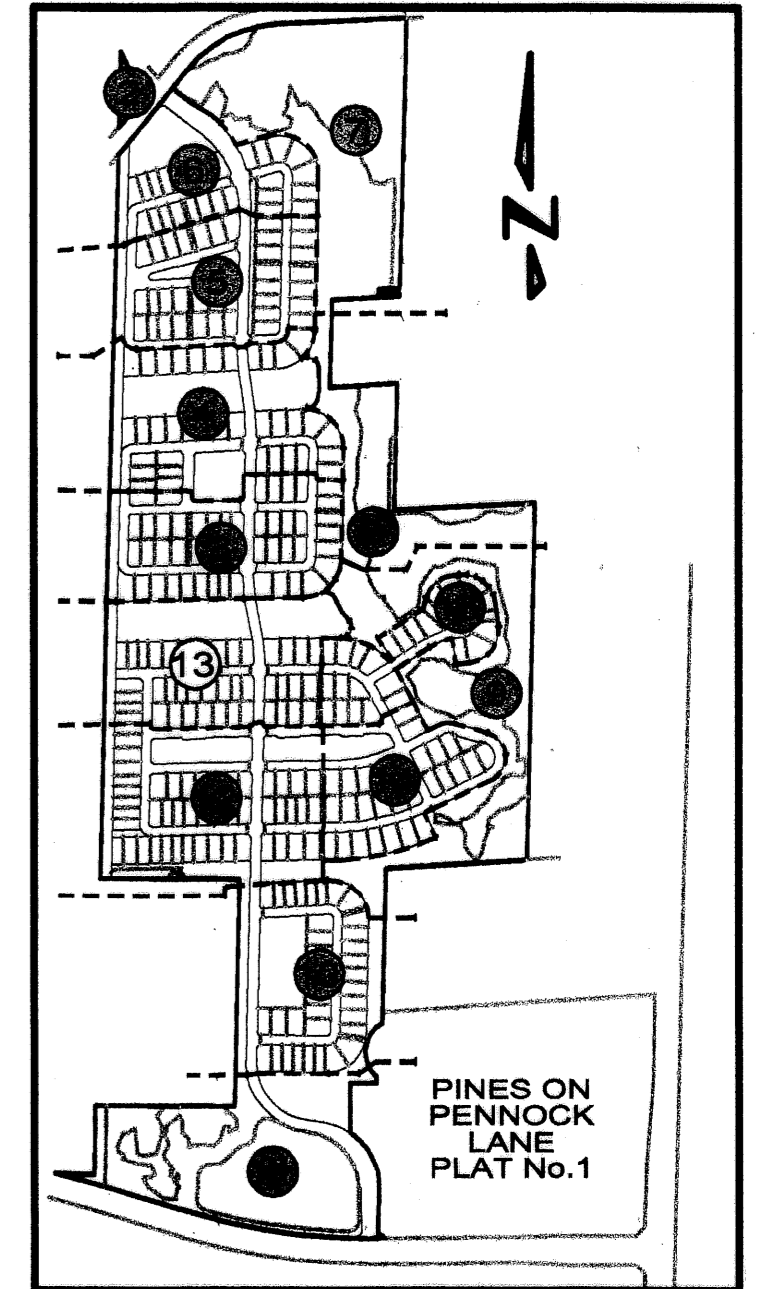
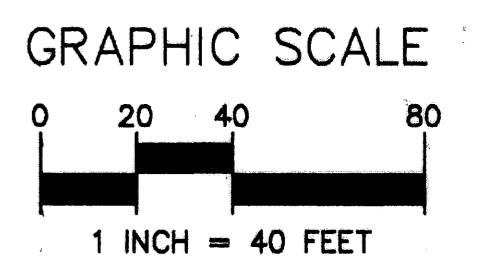


# PINES ON PENNOCK LANE P.U.D. PLAT No.2 (PASEOS)

A PARCEL OF LAND LYING IN THE WEST HALF OF SECTION 12, THE NORTHWEST QUARTER OF SECTION 13,  
and THE NORTHEAST QUARTER OF SECTION 14, TOWNSHIP 41 SOUTH, RANGE 42 EAST  
TOWN OF JUPITER, PALM BEACH COUNTY, FLORIDA  
SHEET 13 OF 16 MARCH 2003



SEE SHEET No.9 OF 16



SEE SHEET No.15 OF 16

SEE SHEET No.14 OF 16

**SYMBOLS LEGEND**

■	SET PERMANENT REFERENCE MONUMENT (P.R.M.) "L.B.4897"
●	PERMANENT CONTROL POINT (P.C.P.)
NPBCID	NORTHERN PALM BEACH COUNTY IMPROVEMENT DISTRICT
R	RADIUS
D	CENTRAL ANGLE
A	ARC LENGTH
ECA	EXCLUSIVE COMMON AREA
C	CENTERLINE
P.O.B.	POINT OF BEGINNING
P.O.C.	POINT OF COMMENCING
+	CHANGE IN DIRECTION
P.S.M.	PROFESSIONAL SURVEYOR AND MAPPER
P.C.	POINT OF CURVATURE

\*NOTE: ALL LOT LINES ARE RADIAL UNLESS OTHERWISE NOTED.



**Keshavarz & Associates, Inc.**  
CONSULTING ENGINEERS - SURVEYORS  
711 N. Dixie Highway, Suite 201  
West Palm Beach, Florida 33401  
Tel: (561) 689-8600 Fax: (561) 689-7476 LB 4897  
THIS INSTRUMENT WAS PREPARED BY MANUEL A. GUTIERREZ, PSM  
PROFESSIONAL SURVEYOR AND MAPPER NO. 4102  
IN THE OFFICES OF KESHAVARZ & ASSOCIATES, INC.  
\\KAVS\SU\687\dwg\687PLAT\_SHT\_13.dwg 03/07/03 08:36:18 AM EST